

Escher GuneWardena  
Architecture

Billy Maynard

Raúl Herrera Daniel

Atelier(s) Alfonso Femia

Carta  
Associés

AMDL Circle

Barreca & La Varra

Rocco Design  
Architects

UNStudio



Editorial Critique:  
Huang Wenjing

*Huang Wenjing*

ISSN 2499-6602



9 772499 660003

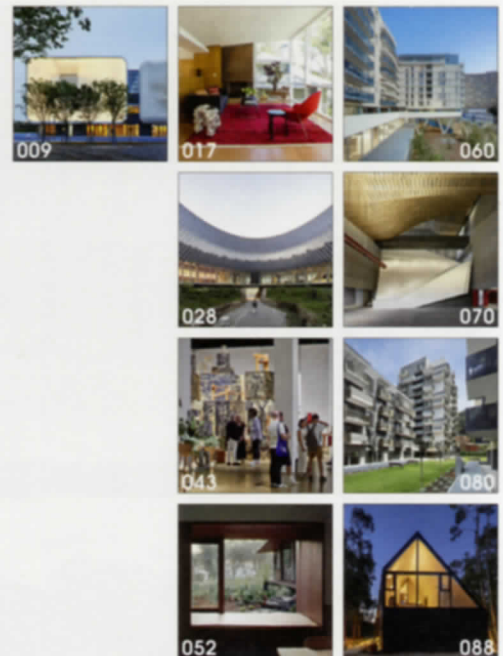
141

ITALIANO  
ENGLISH  
中文

OCTOBER 2022

- 009 ■ EDITORIAL CRITIQUE**  
Sensory Details and Our Patient Search  
Huang Wenjing
- 017 ■ HIGHLIGHTS**, Michael Webb  
Conserving Modernism in L.A.  
Escher GuneWardena Architecture
- 028 ■ JOURNEY TO ITALY**, Valerio Paolo Mosco  
The Elemental Measure of a Pavilion  
AMDL CIRCLE
- 043 ■ DESIGN**  
*Forest Tales*  
Maple, Cherry and Red Oak:  
A Display of Sustainable Wood  
The Exhibition at Triennale Milano
- 051 ■ ARCHITECTURE**
- 052 ■ Flat Rock House**  
This First One Is Just Great!  
Bendalong, New South Wales, Australia  
Billy Maynard
- 060 ■ “8ème Art” Residential and Office Complex**  
Designing Quality Urban Living  
Marseille, France  
Atelier(s) Alfonso Femia  
Carta Associés
- 070 ■ Hong Kong Palace Museum**  
Tradition Generates Innovation  
Hong Kong  
Rocco Design Architects
- 080 ■ “Ex Boero” Social Housing**  
Architecture and Integration  
Genoa, Italy  
Barreca & La Varra
- 088 ■ Casa El Claro**  
A Timber Retreat between Ocean and Mountains  
Maitencillo, Chile  
Raúl Herrera Daniel
- 099 ■ ZOOM**  
*Transform*  
An Artbook on Light and Architecture  
UNStudio

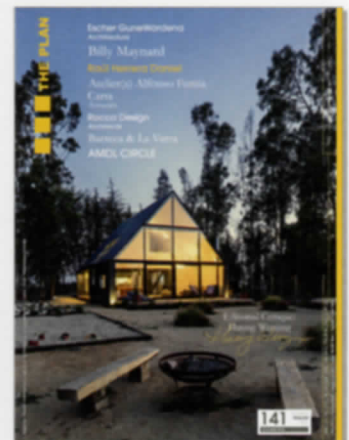
**103 ■ REPORT**



**INDEX**

**COVER**  
Casa El Claro  
Maitencillo, Chile  
Raúl Herrera Daniel

Photo © Aryeh Kornfeld



**COLOPHON**

**Editor-in-Chief**  
CARLOTTA ZUCCHINI

**Managing Editor**  
NICOLA LEONARDI

**Editorial Committee**  
FRANK BARKOW  
WINKA DUBBELDAM  
PHILIP JODIDIO  
JING LIU

JOHN MCASLAN  
MÓNICA PONCE DE LEÓN  
COREN SHARPLES  
HUANG WENJING

**Special Contributors**  
VALERIO PAOLO MOSCO  
LI XIANGNING  
ALIREZA RAZAVI  
RAYMUND RYAN  
YEHUDA SAFRAN  
MICHAEL WEBB

**Graphic & Editing**  
FRANCESCO BONVICINI  
GIULIA BORGHI  
GIANFRANCO CESARI  
ANDREA COLETTA  
DAVIDE MAZZOLI  
GIANLUCA RAIMONDO

**Web Developer**  
MATTEO GANDOLFI

**Editorial Staff**  
ALEXANDRA BERGAMI  
LAURA COCURRELLO  
VALENTINA FINI  
ELISA GROSSI  
SILVIA MALOSSINI  
ILARIA MAZZANTI  
SILVIA MONTI  
FEDERICA NANNETTI  
LUCA PUGGIOLI

**Text Editors**  
FRANCESCO PAGLIARI  
CATERINA TESTA  
ADRIANA DALL'OCICA  
DELL'ORSO  
LUCA MARIA  
FRANCESCO FABRIS

**Translators**  
KIEREN EDWARD BAILEY  
HUIJIN CHENG  
STEPHANIE JOHNSON  
CHRIS TURNER  
ADAM VICTOR

**Advertising and Marketing**  
SERENA PRETI  
VALENTINA MARGINI  
SERENA BABINI

**Subscriptions**  
DAVIDE VEZZANI

**Administration Office**  
RICCARDO PINI  
ANTONELLA PUDDU

**Distribution, Fairs and Promotion**  
MASSIMILIANO APRILI  
SIMONE MIGLIORI

**Printed in Italy**

**All the original drawings in this volume have been elaborated by The Plan Editions**

For more information on the Creative Commons licenses mentioned in the photo credits, please go to: <https://creativecommons.org/licenses>  
The opinions stated by journalists are personal and do not necessarily coincide with those of the publisher and the editor-in-chief of the magazine.  
All the information on the individual projects is supplied by the architects and designers, who release Maglioli S.p.A. of any liability regarding the accuracy of the data supplied.

**Publisher**  
PAOLO MAGGIOLI  
Maggioli S.p.A.  
Via del Carpino, 8  
Santarcangelo di Romagna - Italy

**THE PLAN**  
Art & Architecture Editions  
Via del Pratello, 8 - Italy  
T +39.051.227634  
F +39.051.220099  
E [abbonamenti@theplan.it](mailto:abbonamenti@theplan.it)  
W [theplan.it](http://theplan.it)  
CCAP 0610 U 89003

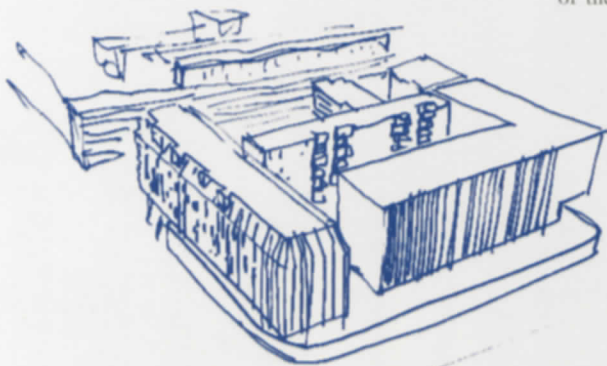
**Print Version ISSN 2499-6502**  
**Online Version ISSN 2385-2054**

© Copyright Maglioli S.p.A.

No part of this Journal may be reproduced or transmitted in any form or by any means, without permission in writing from the publisher. Advertising copy does not exceed 45% of this issue. Unless otherwise specified and agreed, any material submitted to the editor's office shall not be returned. Maglioli S.p.A. is the Data Controller of all personal data kept in its databases for purposes regarding the publication of this Journal. Data Subjects may avail themselves of the rights granted under Articles 15 until 22 of GDPR, writing to [privacy@maglioli.it](mailto:privacy@maglioli.it) or telephoning: +39 051. 227634.

# “8ÈME ART” RESIDENTIAL AND OFFICE COMPLEX DESIGNING QUALITY URBAN LIVING MARSEILLE, FRANCE

Prospective study sketch  
of the built plot



## Atelier(s) Alfonso Femia



Alfonso Femia and  
Simonetta Cenci

In 25 years of activity, this international practice with offices in Genoa, Milan and Paris has operated on all architectural scales. Projects reflect a deep understanding of specific urban and landscape issues. In the period 2020/2021, the practice was awarded important assignments in Italy and abroad.



## Carta Associés



Roland Carta

With offices in Marseille, Paris and Nice, the practice gained wide recognition from the early 1980s for its large public projects both in France and abroad. The projects developed by the company's 40-strong team are always diverse, each in step with its context.



© Luc Boegly



Vibrant and intense, Marseille is a profoundly Mediterranean city like all the great ports that share the same sea. The blue summer skies and sea contrast with the cold winter mistral winds while the famous white Calanques bear witness to a stratified history of different cultures dating back to 600 BC.

Atelier(s) Alfonso Femia and Carta Associés' design for the 8ème Art redevelopment project matches the pace and sequenced density of the city and the balance of work and social activities in Marseille's compact central milieu. Connecting the north of the city with the historic center to the south, Boulevard Michelet passes through the many different districts, from the urban villas on the outskirts to the grand ensembles, the large housing estates, and then to the compact blocks of the old center. The thoroughfare invites visitors to branch off into the many side streets and explore the city's densely layered urban fabric. It was along Boulevard Michelet that the two architecture practices were commissioned to envision the adaptive reuse of the Renault Michelet buildings, creating of 676 apartments, 151 of which social housing, a 90-unit residence for the elderly, and a Renault dealership with garage and offices.

Located on the southeast of the Boulevard between Le Corbusier's Unité d'Habitation and the Vélodrome Stadium, the development also had to relate to sections of the city that although very close to each other, are worlds apart. To the west the plot looks out onto the Boulevard, taking in the variegated urban character of the place. To the south is a loose medley of parking lots, warehouses and urban villas from which, however, emerge the two iconic volumes of the Unité and Le Brasilia. To the north lies the Huveaune river offering the site a more natural outlook that continues to the east and, not too far away, Parc Borély and beyond that, the sea and beaches.

These were the largely imaginary grid lines followed by the architects to orient their adaptive reuse project. The key was to identify the most suitable density for the site and its context, and from there develop a functional program to fit the character of the neighborhood but at the same time create new quality living in a new urban space offering community areas and natural vegetation in a complex whose porous ground floor would create a continuum with the surrounding urban fabric.

The pivotal feature and starting point for the rest of the project on the upper levels was the new Renault dealership. Slightly set back

from the street, the glazed dealership frontage and three glazed patios lend a sense of transparency and openness reaching far into the building.

The Renault garage, showroom and commercial spaces give on to a private road running from Boulevard Barral to Rue des Cypriers, with private customer parking. The roof garden above this long stretch of commercial spaces is in fact the edge of the huge slab on which the rest of the program stands. The innovative concept for this section combines the two basic characteristics of the new real estate: on the one hand, profoundly urban, on the other, recalling the flowing waters in the nearby river.

The dual theme of nature and artifice, fluidity and order permeates the whole project, combining mineral and vegetable, rigidity and flexibility, straight and curved lines, speed and calm. The colors, materials and textures of the façades best expresses this mix.

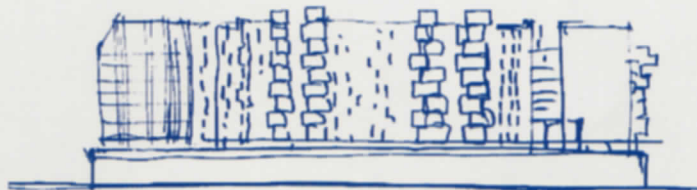
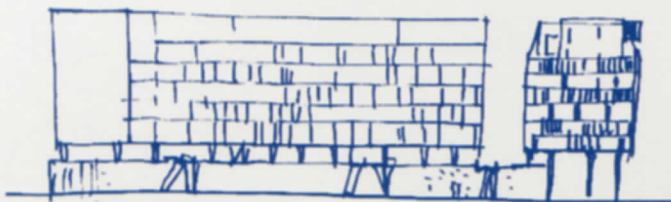
The flat glazing of the dealership offices and showroom facing the Boulevard and city center contrasts to great effect with the extraordinary kaleidoscope of colors of the housing blocks: white, light and darker blues. Blue is also the dominant shade on the plinth, roof, ceramic tiles, plaster, and variously patterned sheet metal.

Not only an addition to quality living spaces, the balconies and loggias have different features depending on their outlook. For example, south-facing apartments have continuous balconies with light blue railings, giving a regular rhythm to the façade surface. The apartments facing the inner courtyards and the three parallel apartment blocks have projecting loggias and balconies with alternating white railings or blue metal parapets with floral or abstract patterns.

Rounded columns, abundant greenery and swirling illustrations of shoals of fish on the ceilings of the first floor recall the nearby river and sea. Although a very compact program in a dense urban environment, the many different solutions developed by Atelier(s) Alfonso Femia and Carta Associés ensure that all inhabitants can identify their own apartment in this huge development thanks to the variety of colors, and balcony and parapet designs.

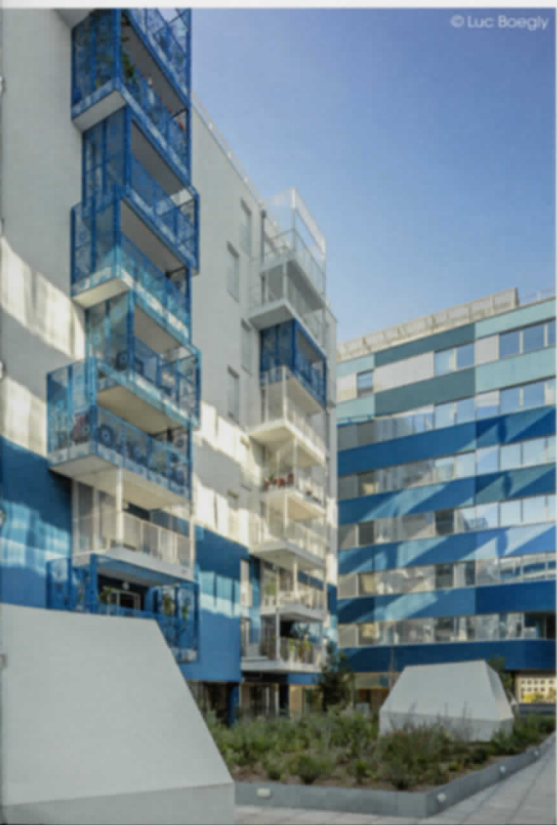
This narrative quality affords inhabitants with a sense of having their own niche in a city as large and variegated as Marseille.

Study sketches of the façades

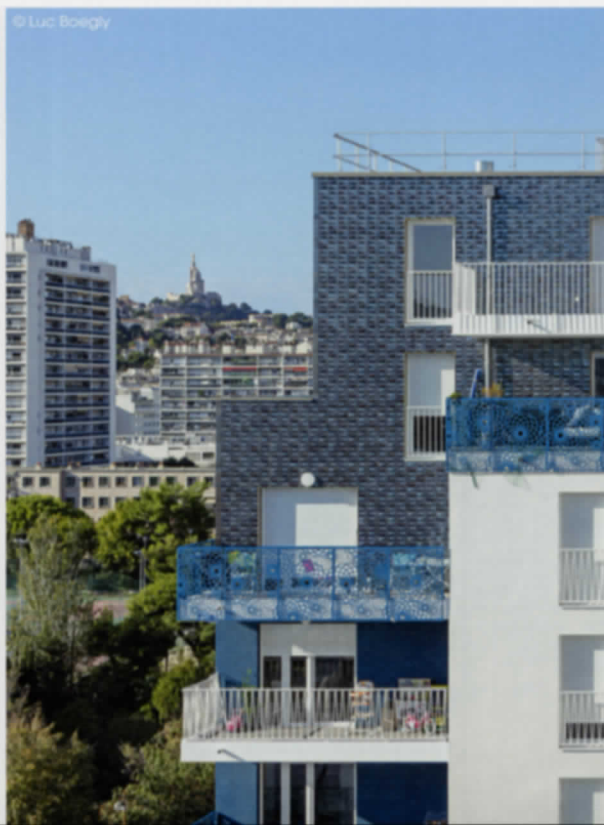




XX section – Scale 1:600



© Luc Boegly



© Luc Boegly

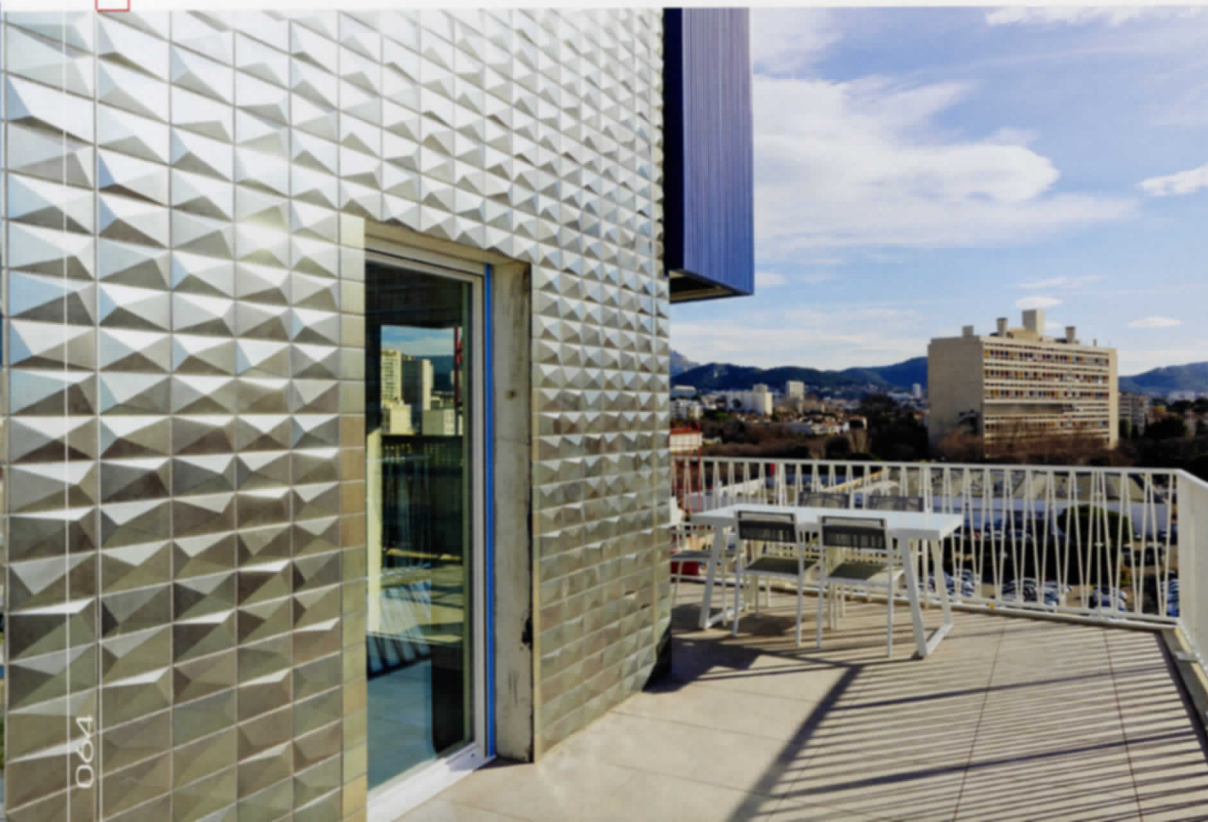


© Luc Boegly

First floor plan – Scale 1:800



© Stefano Anzini © Stefano Anzini



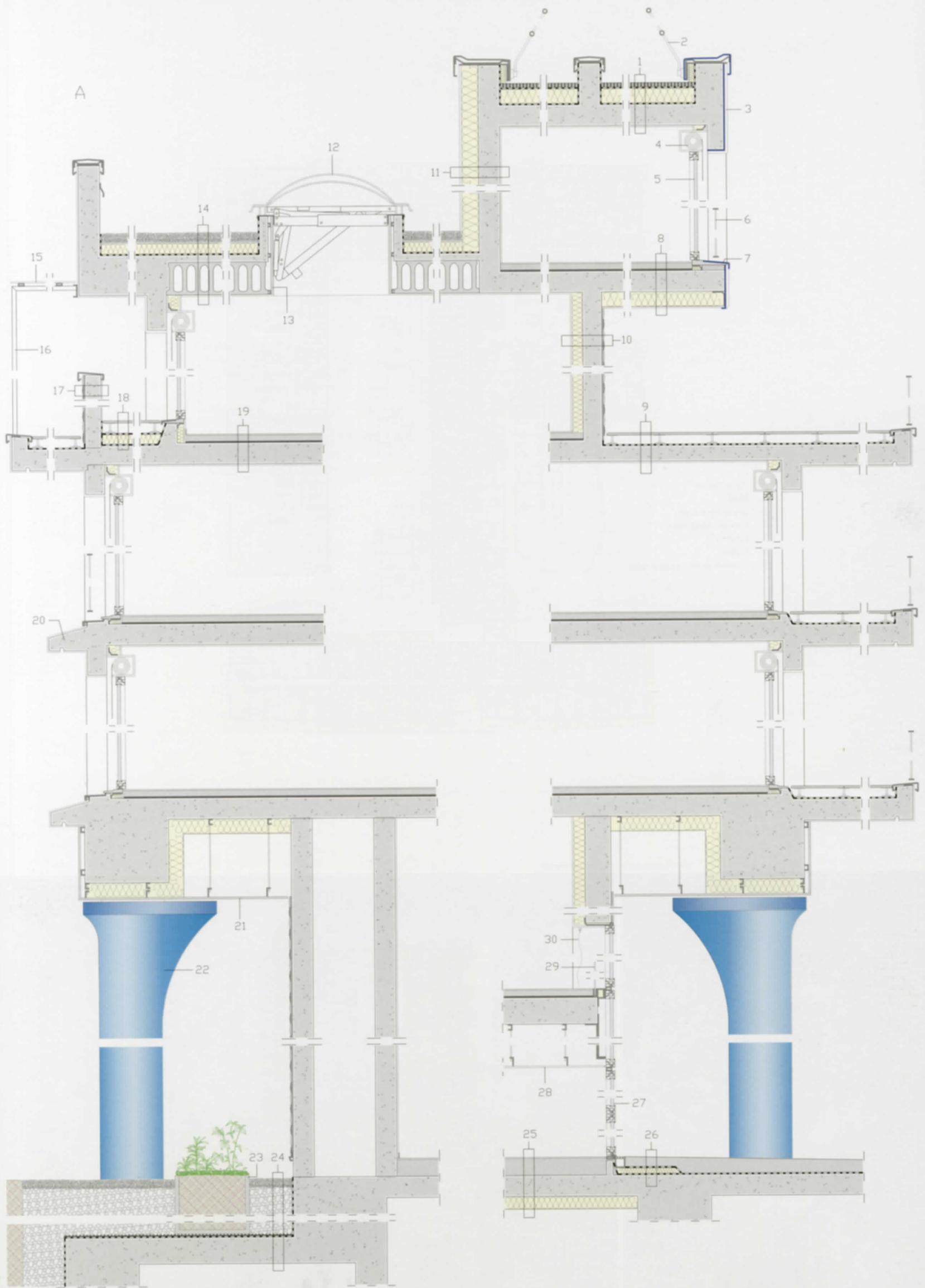
Fourth floor plan – Scale 1:800



© Stefano Anzini







**Detail A:****Northern and southern façades  
Vertical section – Scale 1:40**

- |   |   |  |  |
|---|---|--|--|
| <ol style="list-style-type: none"> <li>1- Roof comprising 1 5/8" (40 mm) polypropylene honeycomb panels, waterproofing membrane, 5 1/2" (140 mm) rigid insulation, vapor barrier, 7 7/8" (200 mm) reinforced concrete slab, plaster finish</li> <li>2- Railing comprising steel flat bars and pipe profiles</li> <li>3- Façade with corrugated sheet metal cladding</li> <li>4- Roller blind</li> <li>5- Aluminum window with 5/16 - 5/8 - 5/16" (8/16/8 mm) glazing unit</li> <li>6- Railing comprising steel box profile rails and pipe profile balusters</li> <li>7- Aluminum flashing</li> <li>8- 3/8" (10 mm) floor tiles, 2 1/8" (55 mm) sealed screed, acoustic insulation, 7 7/8" (200 mm)</li> </ol> | <ol style="list-style-type: none"> <li>reinforced concrete slab, 5 1/2" (140 mm) rigid insulation, stucco</li> <li>9- Terrace deck comprising 3/4" (20 mm) concrete pavers, adjustable pedestals, waterproofing membrane, 5 7/8" (150 mm) reinforced concrete slab, plaster finish</li> <li>10- Textured porcelain stone tiles, mortar setting bed, 7 1/8" (180 mm) reinforced concrete structure, 4" (100 mm) rigid insulation, plaster finish</li> <li>11- Façade comprising stucco, 6 1/4" (160 mm) rigid insulation, 7 7/8" (200 mm) reinforced concrete structure, plaster finish</li> <li>12- Motorized polycarbonate fume extractor</li> <li>13- 1" (25 mm) reinforced concrete cladding on metal C-profiles</li> <li>14- Roof comprising 2 3/4" (70 mm) gravel, non-woven fabric membrane, 4" (100 mm) rigid insulation, waterproofing membrane,</li> </ol> | <ol style="list-style-type: none"> <li>15" (380 mm) reinforced concrete slab with honeycomb panels, plaster finish</li> <li>15- Micro-perforated metal mesh balcony roof</li> <li>16- Steel box profile frame</li> <li>17- Textured porcelain stone tiles, mortar setting bed, 5 7/8" (150 mm) reinforced concrete structure, stucco</li> <li>18- Terrace deck comprising 3/4" (20 mm) concrete pavers, adjustable pedestals, waterproofing membrane, 4" (100 mm) rigid insulation, vapor barrier</li> <li>19- 3/8" (10 mm) floor tiles, 2 1/8" (55 mm) sealed screed, acoustic insulation, 7 7/8" (200 mm) reinforced concrete slab, plaster finish</li> <li>20- Projecting reinforced concrete edging</li> <li>21- Suspended ceiling comprising 1" (25 mm) reinforced concrete sheets on metal droppers</li> </ol> | <ol style="list-style-type: none"> <li>22- Reinforced concrete column (parallel to plane of section)</li> <li>23- Concrete planter</li> <li>24- Gravel, drainage board, waterproofing membrane, 9 7/8" (250 mm) reinforced concrete slab</li> <li>25- 3/8" (10 mm) floor tiles, 6 1/4" (160 mm) screed, 7 7/8" (200 mm) reinforced concrete slab, rigid insulation</li> <li>26- Paving comprising concrete fill, waterproofing membrane, 2 1/8" (55 mm) rigid insulation, waterproofing membrane</li> <li>27- Glass curtain wall with 5/16 - 5/8 - 5/16" (8/16/8 mm) aluminum glazing units</li> <li>28- Suspended ceiling with water-repellent plasterboard panels on metal droppers</li> <li>29- Balustrade comprising safety glass in steel U-profiles</li> <li>30- Blackout blind</li> </ol> |
|---|---|--|--|





© Luc Boegly



© Luc Boegly

## CREDITS

**Location:** Marseille, France  
**Completion:** 2022 – **Client:** Altarea Cogedim – **Total Area:** 58,000 m<sup>2</sup>  
**Cost:** 92,000,000 Euros  
**Architectural and Landscape Design:** Atelier(s) Alfonso Femia (former 5+1AA) with Carta Associés  
**Architects:** Alfonso Femia, Roland Carta – **Project Architects:** Stefano Delogu, Valentin Mazet (Atelier(s) Alfonso Femia), Arnaud Sibille, Ludovic Bisi (Carta Associés)  
**Coordination:** Simonetta Cenci  
**Main Contractor:** VINCI Construction

## Consultants

**Structures:** Artelia – **Landscape:** Paul Pierre Pétel Paysagiste – **Services and Environmental Engineering, Mobility:** Oasiis – **Artist:** Ilaria Di Meo – **Renderings:** AF517, C+T, Frederic Peronne

**Text:** Caterina Testa

**Portrait image** (Alfonso Femia and Simonetta Cenci): Filippo Avandero, courtesy of Atelier(s) Alfonso Femia

**Portrait image** (Roland Carta): Madame Christine Ledroit-Perrin, courtesy of Carta Associés

**All images** courtesy of Atelier(s) Alfonso Femia